

# THE POTTER YACHTER BAY AREA MESSABOUT

*Familiar Faces in New Places*



October 18-27, 2019

A grand exercise in pottering around, because...

*"There is nothing – absolutely nothing – half so much worth  
doing as simply messing about in boats."*

Kenneth Grahame  
"The Wind in the Willows"

## MISSION STATEMENT

### **Our Mission**

As always, our mission is to trailer our intrepid vessels to a launching spot of our choosing, demonstrate that Potter Yachters actually go out and sail our boats, and advance the cause of Potterdom.

**To that end,**

*Have fun and sail safe!*

#### NOTE

While we travel with friends, you sail alone. You are the captain of your vessel.

The enclosed information is for planning and reference only. The GPS coordinates have not been verified and the sailing directions are only meant to help you in the planning of your route.

## BAY AREA MESSABOUT OCT 2019

**Game Plan:** to spend 10 days sailing our intrepid vessels in the San Francisco Bay and sleeping aboard in new ports. The plan is to gather at Coyote Point, leaving the trailers there, then sailing to Treasure Island, Loch Lomond, Angel Island, Sausalito, San Francisco, and then back to Coyote Point. As much as possible, we will emphasize sailing from port to port and enjoying the sightseeing at our destinations.

**Dates:** Oct 18 to Oct 27. There are no holidays during this time. Fleet Week is the week before.

**Weather:** The long-range weather forecast for October calls for mid-70's and mostly sunny; Historical highs of 74 and lows of 56. Forecasts don't currently predict any precipitation during our dates.

### SAIL PLAN

**Day 1: Friday, Oct 18.** Arrive Coyote Point Rec Area, CA. (See *Coyote Point Info* for arrival details.) Optional day sail. Meet for drinks and dinner around 5pm at Coyote Point YC.

**Day 2: Saturday, Oct 19.** Depart Coyote Point Yacht Harbor for Clipper Cove, Treasure Island. (~15 nm) Potluck dinner at the docks. Small store available on the island.

**Day 3: Sunday, Oct 20.** Depart Treasure Island for Loch Lomond Marina. (12 nm upwind)

**Day 4: Monday, Oct 21.** Depart Loch Lomond for mooring at Angel Island. (7 nm)  
Option: Layover and day sail in the area of Loch Lomond.  
Option: lunch at Ayala Cove, Angel Island then go to Sausalito (11 nm)

**Day 5: Tuesday, Oct 22.** Depart Angel Island for Clipper Harbor, Sausalito (4nm)  
Try for a sail under the Golden Gate Bridge (unless weather is uncooperative).

**Day 6: Wednesday, Oct 23.** Layover in Sausalito and sightsee the city.  
Option: Day sail in the area of the Golden Gate Bridge.

**Day 7: Thursday, Oct 24.** Depart Sausalito for SF Marina (West Harbor), San Francisco. (5 nm)  
Try for a sail under the Golden Gate Bridge (unless weather is uncooperative).  
Try for a sail to Pier 1-1/2 for lunch (or second try for Golden Gate, if weather is good).

**Day 8: Friday, Oct 25.** Layover in SF Marina and sightsee the city.  
Option: Day sail in the area of the Golden Gate Bridge.

**Day 9: Saturday, Oct 26.** Depart SF Marina for Coyote Point. (16 nm)  
Option: Retrieve upon arrival.

**Day 10: Sunday, Oct 27.** Retrieve in the morning and depart Coyote Point Rec Area.

# Bay Area Messabout

## ROUTE MAP



### **Ayala Cove, Angel Island**

Belvedere/Tiburon Ph:(415) 435-3392

**Latitude:** 37° 52' 4.73" N (37.86798)

**Longitude:** 122° 26' 10.61" W (-122.43628)

### **Coyote Point YC, San Mateo**

1820 Coyote Point Dr. Ph:(650) 347-6730

**Latitude:** 37° 35' 13.09" N (37.58697)

**Longitude:** 122° 18' 58.03" W (-122.331612)

### **Clipper Yacht Harbor, Sausalito**

310 Harbor Dr. Ph:(415) 332-3500

**Latitude:** 37° 52' 16.36" N (37.87121)

**Longitude:** 122° 29' 48.48" W (-122.49680)

### **Loch Lomond Marina, San Rafael**

110 Loch Lomond Dr. Ph:(415) 454-7228

**Latitude:** 37° 58' 18.91" N (37.97192)

**Longitude:** 122° 29' 1.07" W (-122.48363)

### **SF Marina, San Francisco**

West Harbor Ph:(415) 831-6322

**Latitude:** 37° 48' 31.59" N (37.80877)

**Longitude:** 122° 26' 22.36" W (-122.43954)

### **Travis Marina, Horseshoe Cove**

1679 Sommerville Rd. Ph:(415) 332-2319

**Latitude:** 37° 50' 0.17" N (37.83338)

**Longitude:** 122° 28' 28.85" W (-122.47468)

### **Treasure Isle Marina, San Francisco**

1 Clipper Cove Way Ph:(415) 981-2416

**Latitude:** 37° 48' 53.1" N (37.81475)

**Longitude:** 122° 22' 11.96" W (-122.36999)

D°M'S" (and DD) GPS coordinates provided here are from [latitude.to](http://latitude.to) and have not been verified. All maps and charts printed in this document are **NOT FOR NAVIGATION- REFERENCE ONLY!**

## **Bay Area Messabout October 2019 STUFF TO KNOW**

### **General:**

Exercise reasonable caution to avoid shipping traffic, which can be deceptively quick for such large creatures. Currents associated with ebb and flood can reach nearly 6 knots at times. The area known as “The Slot” (between Treasure Island and Angel Island, reaching from the Golden Gate Bridge towards Berkeley) can be quite windy and choppy in the afternoons. Winds are usually reasonable before noon, and get strong from 1-5pm.

Latitude 38 published a guide to Bay Sailing which shows the slot and offers tips:

<https://www.latitude38.com/features/BaySailingGuide.pdf>

### **Charts:**

I use free chartplotter software ([opencpn.org](http://opencpn.org)) for planning. Charts are freely available in RNC, ENC and multiple other formats from NOAA’s Office of the Coast Survey:

<http://www.charts.noaa.gov/InteractiveCatalog/nrnc.shtml>

1. NOAA Chart 18650; covers Treasure Island, SF Marina (labelled “Yacht Harbor” and “Gashouse Cove”), and Horseshoe Cove.
2. NOAA Chart 18651; covers Coyote Point.
3. NOAA Chart 18653; covers Sausalito, Loch Lomond, and Angel Island (Ayala Cove).

### **VTS:**

A Vessel Traffic Service (VTS) exists in pretty much the entire area we’ll be sailing. VTS info is in 33 CFR 161 or the Coast Pilot, the latter of which is available at

[https://nauticalcharts.noaa.gov/publications/coast-pilot/files/cp7/CPB7\\_WEB.pdf](https://nauticalcharts.noaa.gov/publications/coast-pilot/files/cp7/CPB7_WEB.pdf)

Our boats are not required to carry radios nor monitor VTS, however the ship traffic is significant for the portion of our route west of Ballena Bay and Emeryville. You can monitor “San Francisco Traffic” on Channel 14. “San Francisco Offshore Vessel Movement Reporting Service” uses Channel 12. It’s best to keep a good lookout and give the container ships and all ferry traffic a wide berth. (Even if you think you’re giving them enough room... give them more.)

### **Cost Estimate:**

Coyote Point: \$1/ft/night cash, no launch fee, parking is compliments of the yacht club

Treasure Island: \$30/boat minimum

Loch Lomond: unknown

Angel Island: \$15 dock day-use; \$30/night mooring fee; no overnight at docks

Clipper Harbor, Sausalito: \$2/ft/night + \$3/nt for 30-amp; need reg/insur & transient doc

SF Marina: \$4/ft/night



# Bay Area Messabout October 2019 HARBOR INFO

**1. Coyote Point** yacht club: (650) 347-6730  
<https://parks.smcgov.org/COYOTE-POINT-MARINA>  
Harbormaster: Mark Bettis Port Capt: Billy Rinehart

*Directions:*

Heading **north** on Hwy 101, take the Peninsula Ave. exit (417B), turn right onto Airport Blvd, left at Peninsula Ave/Coyote Point Dr and continue to the park gate.

Heading **south** on Hwy 101, take the Poplar Ave exit (417), turn right onto Humboldt St, right onto Peninsula Ave, then continue to the park gate.

*Entrance.* Seniors (62+) get free entry on Friday.  
**See instruction on next page.**



*Launch and parking.* The launch ramp is at the north end of the marina, while the yacht club is at the south end. The \$6 launch fee will be waived for Potter Yachters who park in the yacht club's lot south of the yacht club building.

Fuel dock is located near the launch ramp, at the end of the pier by the harbormaster's office.

Mark Malcolm (Port Captain in previous years) is a friend of Dave Bacon and of all Potter Yachters.

Lunch is 11:30-1:30 at Coyote Point Yacht Club. Bar opens at 5pm. Dinner 5-8pm.

[Poplar Creek Grill](#) (7am-8pm) is a 10 minute walk away.



Dock 20 directly in front of the yacht club is the guest dock, with 177 ft of side-tie and 30 ft of end-tie space. Contact me (Phil) for the dock key when you arrive. See map:

<https://parks.smcgov.org/sites/parks.smcgov.org/files/documents/files/Berther-Map.png>

## Coyote Point Park Entrance Procedure For Seniors & Veterans

Seniors (62+) on non-holidays Monday through Friday, and [veterans with proof of veteran's status](#), enter San Mateo County Parks for free, but you still need to print out a stub and place it on your dashboard.



### Instructions for Payment Machine

1. Press *D*
2. Choose *cash* or *credit*
3. Select *Senior* or *Veteran* (same line)
4. You will see this prompt: *Proof of Eligibility May Be Required - press D to Print Pass*
5. Press *D*
6. Remove pass from the receipt tray
7. Display on your dashboard, face up

CPYC keys and cards are returned before you depart and reissued on your return, so that they can be available for anyone else cruising in during the week while you are away. Each captain will be responsible for their own bar and food bill. Cash, Visa, or MasterCard are accepted.

Restaurants/Sights to see:

Poplar Creek Grill, at park entrance – 10 min. walk

Nini's Coffee Shop, N. Idaho St off Peninsula Ave over freeway – 22 min. walk or Drive there

Bay Trail Hiking – Nice scenery

---

## Sailing Coyote Point to Treasure Island:

Compass heading 338° Magnetic will take you to the east of Treasure Island. Winds are generally from the west and they are predicted to be 5-10 knots. I'd guess that the best we'll be able to do is 350° mag, so we'll be tacking to get up there.

The current will be of some help in the morning (0.5 knot) until about 11am. Contrary current will reduce our speed by about 0.5 knot around noon and 1.7 knots by about 2pm.

We should plan to leave by 8am. Hopefully we can get there by 2pm.

They have a computerized check-in system, now. Apparently, you fill out all your information using their computer in the harbormaster's office (or ahead of time, if they send me the website info) and then you can pay by cash or credit card when you're there.

Sunset: 6:27 PM, Sunrise: 7:21 AM

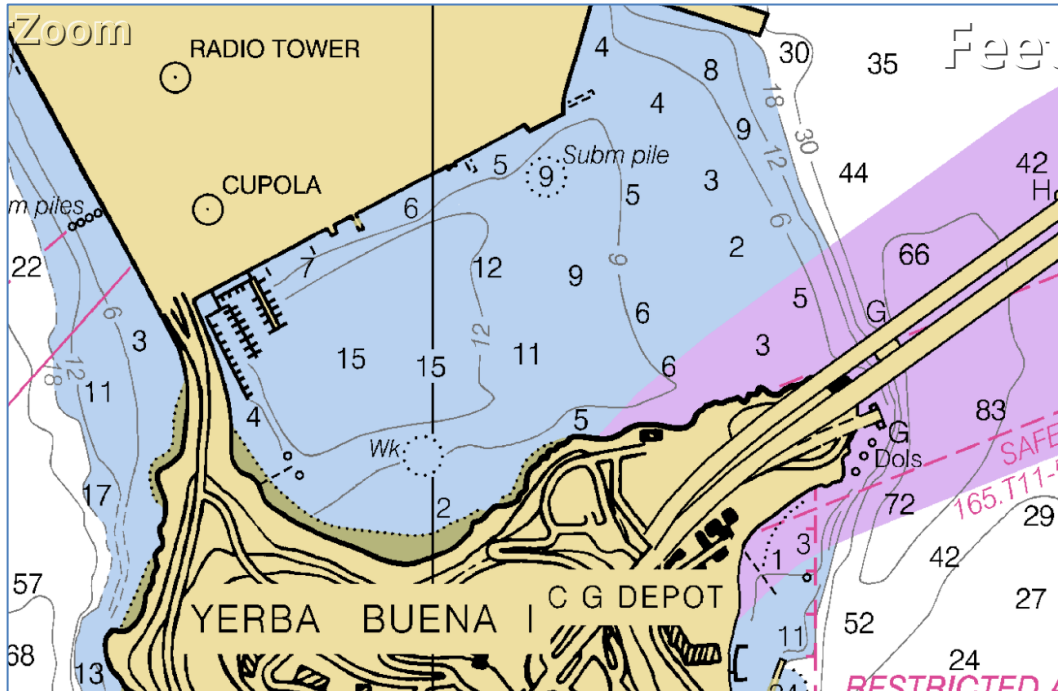
Max Ebb:

Sat 10-19 9:16 AM -0.5 knots [2.8 mi E of Oyster Point](#); Slack 10:39 AM (Coyote Pt)

Sat 10-19 9:08 AM -0.6 knots [2 mi E of Point Avisadero](#); Slack 10:36 AM (Alameda)

Sat 10-19 8:28 AM -0.8 knots [Rincon Point MidBay](#); Slack 10:17 AM; 1:50PM +1.7 knot

**2. Treasure Island Marina / Clipper Cove** (415) 981-2416 Anthony  
<https://TreasureIslandYachtHarbor.com>



Treasure Island was created on [a shoal north of Yerba Buena Island](#) in 1939. The docks here were a bit rickety last year, but they're upgrading the marina. As part of their upgrades, they've introduced a computerized check-in system to take your info and payment. I've been told that we should be able to get slips. There's usually room to anchor in Clipper Cove, if necessary. Keep in mind that you're not allowed to beach overnight.

See <http://TIYC.org> for [Map of the Harbor](#)

Noteworthy places:

[Island Market & Deli](#): A great place for snacks, sandwiches, etc. Open 8:30am-11pm  
[Gun Turret Display](#) adjacent to the building reportedly housing the [Treasure Island YC](#)

**Sailing Treasure Isle Marina to Loch Lomond Marina:**

Course 312° Magnetic from just under the bridge at Yerba Buena Island will take you to the entrance to Loch Lomond. As noted before, you'll be tacking so this is likely to be a long sailing day. The current is in our favor as we get closer to the marina, though. Be mindful of shipping and ferry traffic along our route. It can get busy here.

Sunrise: 7:23 AM, Sunset: 6:25 PM

Currents @ [1.15 mi east of Bluff Point](#) between Angel Island and Loch Lomond

2019-10-20 Sun 8:24 AM PDT -0.0 knots Slack, Ebb Begins

2019-10-20 Sun 10:28 AM PDT -0.4 knots Max Ebb

2019-10-20 Sun 12:32 PM PDT 0.0 knots Slack, Flood Begins

2019-10-20 Sun 4:08 PM PDT 0.8 knots Max Flood



## 2. Loch Lomond Marina

(415) 454-7228

<http://lochlomondmarina.com>



Restaurants/Sights to see:

[Andy's Local Market](#) and restaurant – in the marina

**Sailing** *Loch Lomond to Angel Island:*

We have a following current again helping us get to Angel Island.

Be mindful of shipping and ferry traffic in this area.

Monitor channel 14 (Vessel Traffic Service) if you have a second radio.

Sunrise: 7:24 AM, Sunset: 6:24 PM

Currents @ [1.15 mi east of Bluff Point](#) between Angel Island and Loch Lomond

Mon 10-21-2019:

5:27 AM 1.0 knots Max Flood

9:33 AM -0.0 knots Slack, Ebb Begins

11:28 AM -0.5 knots Max Ebb

1:50 PM 0.0 knots Slack, Flood Begins

5:14 PM 0.7 knots Max Flood

### 3. Ayala Cove, Angel Island

Angel Island Conservancy (415) 435-3392

<https://angelisland.com/>



We're going to try mooring at [Ayala Cove](#) for a night. You need loooong dock lines because the mooring balls are about 100' apart. Pick up a mooring and dinghy over to pay the \$30 mooring fee.

The [official documentation](#) says two boats can raft up on a pair of mooring balls, but I imagine we can get four of our small boats on without a problem. It may not be so busy that we need to do that, though.

The island is only accessible by boat, and ferries bring (a bunch of) the public every day. There's a small restaurant on the island which closes at 3:30pm.

The last ferry off the island is at 4pm, so you can make use of the picnic tables & BBQ grills by the beach for a quiet dinner. (Bring charcoal.) Boaters who have a mooring can access the island with their dinghy until 10pm.

**NOTE:** Dogs are not allowed on the island.

#### **Sailing Angel Island to Sausalito:**

We have an ebb around noon. It's a fairly short sail to daymark "2" where you'll probably turn on your engine anyway. It's a long, narrow channel to get to Clipper Harbor.

**Max Ebb:**

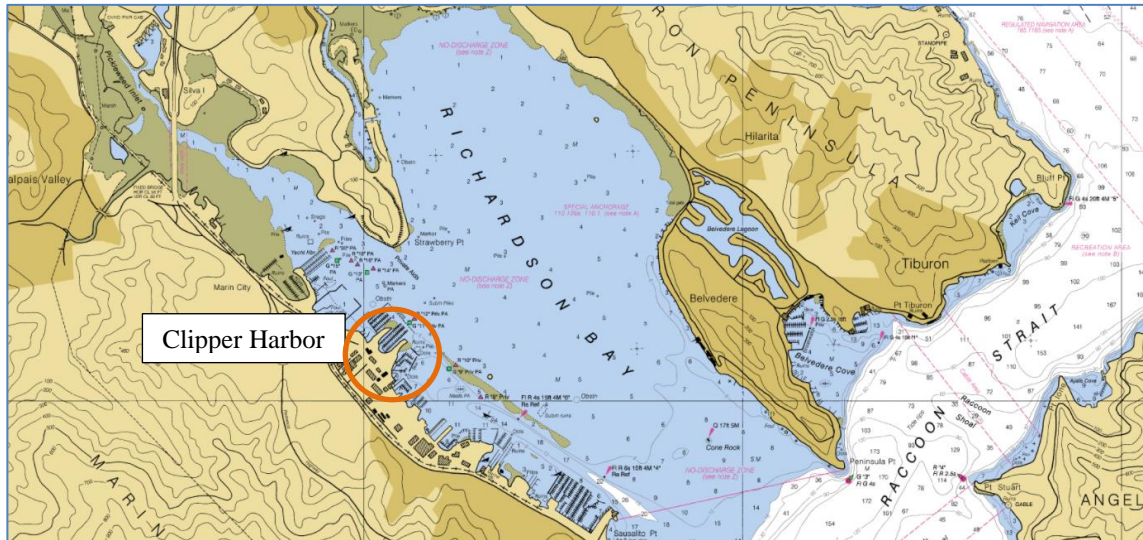
Tues 10-22 11:57 AM -1.2 knots [Raccoon Strait](#); Slack 9:26 AM & 2:40 PM



## 4. Clipper Yacht Harbor

Sausalito (415) 332-3500

<http://clipperyacht.com/>



We will be given explicit instructions to prepare for our arrival here. Each boater will need to fill out and complete a temporary license agreement. They also require the declarations of their insurance coverage showing boater's liability at the time their temp license agreement is submitted. A single point of contact is requested for paperwork and payments, so I'll probably pay and get reimbursed by all of you. We will have assigned slips. I'll send an email with details. I believe they still charge \$2.00 per foot per night, and \$3.00 / night for 30 amp electricity, or \$10.00 / night for 50 amp electricity. There is a \$20.00 deposit per key, which is refundable upon return of the key.

### **Richardson Bay Anchoring Option:**

[info from **Richardson Bay Authority**]

There is a 72 hour rule in effect that allows unrestricted anchoring for 72 hours within a seven day period as long as the vessel is located outside of all small boat channels and the Dunphy Park area.

Please be aware that depths in the bay get progressively shallower beyond Daymarker #4.

Anchor securely with a Danforth anchor, or any type specifically suited for loose mud, with sufficient scope to compensate for a six foot tide. Plow anchors do not hold well in Richardson's Bay. The afternoon summer winds regularly clock in at 20-30 knots from the west. During winter months, gale force winds are observed from both north and south during storms.

**Sunrise: 7:26 AM, Sunset: 6:21 PM**

Restaurants in Sausalito:

[Anchorage 5](#) Restaurant – 7am-3pm

[Fish](#) Restaurant – 11:30am-8:30pm

[Sausalito Seahorse](#) Restaurant – 10:30am-11pm

Sights to see:

[Bay Model](#) – 9am-4pm (Closed Monday)

### Sailing Sausalito to SF Marina:

Course 140° magnetic for about 3nm from daymark “2” will take you to the entrance to SF Marina’s West Harbor. If you look closely, there’s something on the tip of land called the “Wave Organ”. The west side is where the St. Francis Yacht Club is located.

Currents:

@ [Alcatraz north](#) (Mid-Bay)

2019-10-23 Wed	7:23 AM PDT	2.2 knots	Max Flood
2019-10-23 Wed	10:00 AM PDT	-0.0 knots	Slack, Ebb Begins
2019-10-23 Wed	1:19 PM PDT	-2.1 knots	Max Ebb
2019-10-24 Thu	5:28 AM PDT	0.0 knots	Slack, Flood Begins
2019-10-24 Thu	8:14 AM PDT	2.4 knots	Max Flood
2019-10-24 Thu	10:38 AM PDT	-0.0 knots	Slack, Ebb Begins
2019-10-24 Thu	2:08 PM PDT	-2.7 knots	Max Ebb

@ [Golden Gate Bridge](#)

2019-10-23 Wed	6:20 AM PDT	1.7 knots	Max Flood
2019-10-23 Wed	10:40 AM PDT	-0.0 knots	Slack, Ebb Begins
2019-10-23 Wed	12:55 PM PDT	-0.5 knots	Max Ebb
2019-10-23 Wed	2:21 PM PDT	0.0 knots	Slack, Flood Begins
2019-10-24 Thu	7:13 AM PDT	1.8 knots	Max Flood
2019-10-24 Thu	11:25 AM PDT	-0.0 knots	Slack, Ebb Begins
2019-10-24 Thu	1:52 PM PDT	-0.6 knots	Max Ebb
2019-10-24 Thu	3:17 PM PDT	0.0 knots	Slack, Flood Begins

### Horseshoe Cove Marin, CA. Travis Marina: (415) 332-2319

<http://PresidioYachtClub.org>

About 2 nm from SF Marina



Last year, this was offered as an optional overnight location with the caveat that we were told there wouldn't be dockspace for all of us. Travis Marina manages the docks.

The yacht club bar is open on Thursday and Friday starting at 4pm. It may be fun to poke your nose into this cove on your way out the Gate on one of our layover days.

The [history of Horseshoe Cove](#) is quite interesting.





**Sailing SF Marina to CPYC:**

Follow the city shoreline to the east and southward. From just under the bridge at Yerba Buena Island, course 150° Magnetic for 14 nm will take you past Hunter's Point and back to Coyote Point.

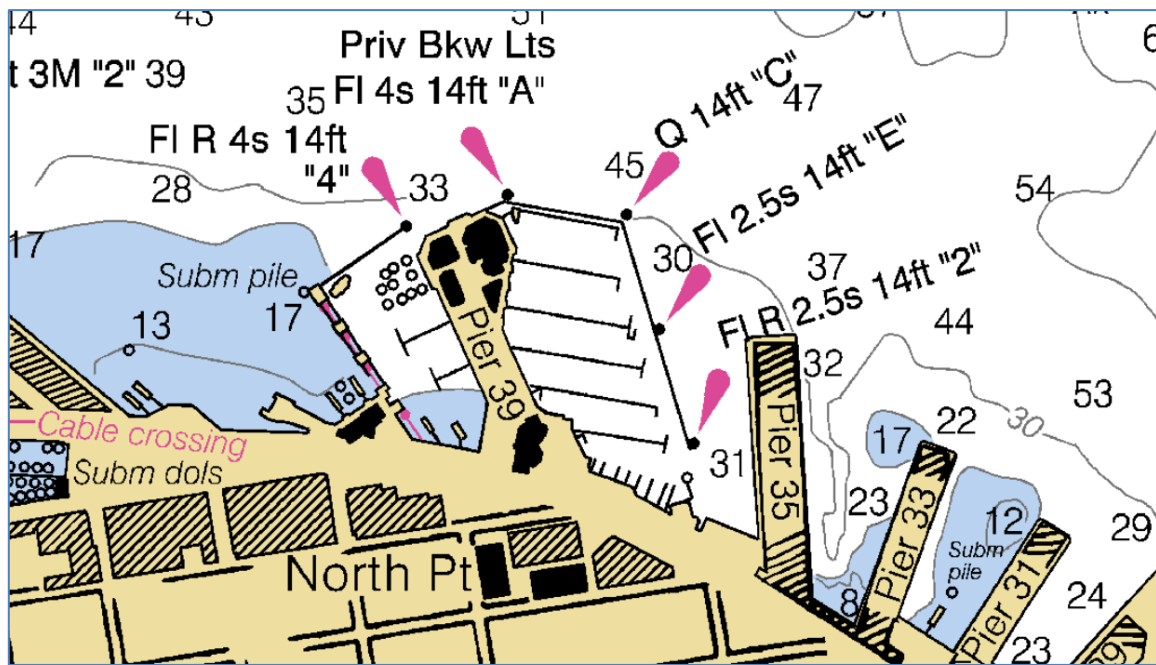
Sunset: 7:28 PM, Sunrise: 6:17 AM

Currents @ [1 mi east of Point Avisadero](#) halfway to Coyote Point from Treasure Island

2019-10-25	Fri	5:02 AM PDT	0.0 knots	Slack, Flood Begins
2019-10-25	Fri	7:50 AM PDT	1.9 knots	Max Flood
2019-10-25	Fri	11:20 AM PDT	-0.0 knots	Slack, Ebb Begins
2019-10-25	Fri	2:20 PM PDT	-1.9 knots	Max Ebb
2019-10-25	Fri	5:44 PM PDT	0.0 knots	Slack, Flood Begins
2019-10-26	Sat	5:49 AM PDT	0.0 knots	Slack, Flood Begins
2019-10-26	Sat	8:34 AM PDT	2.0 knots	Max Flood
2019-10-26	Sat	11:58 AM PDT	-0.0 knots	Slack, Ebb Begins
2019-10-26	Sat	3:02 PM PDT	-2.1 knots	Max Ebb

**5b. Pier 39** San Francisco (415) 705-5436  
<http://Pier39marina.com>

About 6 nm from Sausalito



I included this information last year, and I'm including it here, too, in case you might want to take a trip over to Pier 39 on our layover days.

If you do visit Pier 39, here's some info:

Pier 39 will let you tie up on the west side (where the sea lions and ferries are located) if you call them in the morning and ask to stay for a few hours. They have "partial day" rates.

Further south, at Pier 1-1/2, you can tie up a boat for free (first-come, first-serve) for up to 3 hours. That pier is also used by the water taxi. It's close to the Ferry Building and MTA trams.

Getting around the city is easy with the [Mass Transit Authority \(MTA\)](#) light rail trains and buses. A [Clipper Card](#) is the easiest way to pay for each trip (\$2.50 any distance) and can be purchased at any Walgreens (the nearest one is just a few blocks away; a 7 minute walk to Bay & Powell Streets). With the Clipper Card, [tag once after 8:30pm](#) and you don't have to pay again all night (don't tag in again, or they'll charge you... you just have to know this). Comes in handy if you want to see the AT&T ballpark but want to avoid the 1-hour walk each way.

**Restaurants near Pier 39:**

[La Mar](#) Restaurant – Pier 1-1/2; opens at 11:30 AM; drinks 3-6; dinner 5:30 PM to close

[Bubba Gump](#) Restaurant – 10:30am-11pm

many other ice cream, chowder, donut shops, etc. on Pier 39

**Sights to see:**

[Ferry Building Marketplace](#) – 10 AM to 6 PM most days

[AT&T ballpark](#) – you can walk inside the park on non-game days (like Thursday 9/20)

[Piers of San Francisco](#) – Pier 1-1/2 has a water taxi and is adjacent to the Ferry Building

**Bay Area Messabout  
2019 ATTENDEE CONTACT INFO**

Name: **Jon Barber**  
Cellphone: 209-604-6132  
Boat Name: *Ol' 44*  
Boat Type: Montgomery 17  
Boat LOA & beam: 17'  
Hull/Deck Color: Blue  
Sail Color: White  
Reg# CF 4361 KY  
Emergency Contact: Laura Barber  
Emergency Contact Phone: 209-604-5818 cell

Name: **Judy Blumhorst**  
Cellphone: 925-997-0786  
Boat Name: *Funtastic*  
Boat Type: Corsair F24 Trimaran  
Boat LOA & beam: 24' & 18'  
Hull/Deck Color: black/white  
Sail Color: gray #3  
Reg# CF 1756 UB  
Emergency Contact: Dave Blumhorst  
Emergency Contact Phone: 925-487-1589 cell

Crew: **Anton Berteaux**  
EmerCont: Federica Beatrice Berteaux  
EmerCell: 530-902-7631

Name: **John Chille**  
Cellphone: 510-604-6518  
Boat Name: *At Last*  
Boat Type: Montgomery 15  
Boat LOA & beam:  
Hull/Deck Color: cream/cream (burgundy cove stripe)  
Sail Color: white #189  
Reg# CF 9054 HV  
Emergency Contact: Pam Cabot  
Emergency Contact Phone: 805-218-5625

Name: **Jim 'Goose' Gossman**  
Cellphone: 916-719-9355  
Boat Name: *Grace*  
Boat Type: Nimble Kodiak  
Boat LOA & beam: 26' & 8'6"  
Hull/Deck Color:  
Sail Color: Tanbark  
Reg# CF 8363 UA  
Emergency Contact: Gail Gossman  
Emergency Contact Phone: 707-290-5394



Name: **Dave & Francesca Kautz**

Cellphone: 650-575-7757

Boat Name: *Zoe*

Boat Type: Capri 26

Boat LOA & beam: 26'3 & 9'10"

Hull/Deck Color: white

Sail Color: white

Reg# CF 2120 SF

Emergency Contact: Nick Kautz

Emergency Contact Phone: 650-776-9129

Name: **Phil Marcelis**

Cellphone: 510-710-7383

Boat Name: *Family Time*

Boat Type: West Wight Potter 19

Boat LOA & beam: 20' & 7.5'

Hull/Deck Color: White/White

Sail Color: White

Reg# CF 5256 KA

Emergency Contact: Kimberly Marcelis

Emergency Contact Phone: 510-710-7384 cell

Name: **Dan Phy**

Cellphone: 707-472-8734

Boat Name: *Six*

Boat Type: Montgomery 16

Boat LOA & beam: 16' & 7'

Hull/Deck Color: white/white

Sail Color: white

Reg# CF 2125 SY

Emergency Contact: Mary Phy

Emergency Contact Phone: (707) 961-1257

Name: **Mark & Cynthia Sabin**

Cellphone: 916-201-0931

Boat Name: *Half Fool*

Boat Type: ComPac Suncat

Boat LOA & beam: 17' & 7'3"

Hull/Deck Color: White

Sail Color: White

Reg# CF 9599 UH

Emergency Contact: Jeanne Sabin

Emergency Contact Phone: 916-716-2794

Name: **Rob Sampson**

Cellphone: 650-207-4910

Boat Name: *Mud Hen*

Boat Type: Ranger Tug (diesel)

Boat LOA & beam: 21' & 7'

Hull/Deck Color: cream/white

Sail Color: no sail

Reg# CF 0084 SN

Emergency Contact: Dan Sampson

Emergency Contact Phone: 831-359-9075

Name: **Eric Zilbert**

Cellphone: 530-665-0698

Boat Name: *Riptide*

Boat Type: West Wight Potter 19

Boat LOA & beam: 19' & 7.5'

Hull/Deck Color: white/white

Sail Color: White, #621

Reg# CF 7148 SX

Emergency Contact: Evan Erskine-Zilbert

Emergency Contact Phone: 530-400-1969

Name:

Cellphone:

Boat Name:

Boat Type:

Boat LOA & beam:

Hull/Deck Color:

Sail Color:

Reg#

Emergency Contact:

Emergency Contact Phone: