

THE GREAT POTTER YACHTER

NORTHWEST ESCAPE

AND

MESSABOUT

September 2003

*“There is nothing – absolutely nothing –
half so much fun doing
as simply messing about in boats.”*

**Kenneth Grahame
“The Wind in the Willows”**

MISSION STATEMENT

The mission

Test the feasibility of extended trailer/sails to the Pacific Northwest to advance the cause of Potterdom.

To that end

A small group of dedicated Potters will therefore rendezvous and trailer their sailing vessels to the Puget Sound area to explore the wilds thereof.

As always

Our ultimate goal will be as the Commodore of the Potter Yachters, Rich McDevitt, has commanded,

HAVE FUN!

THE GAME PLAN

Day 1: Wednesday, Sept. 10. Rendezvous at Orland, CA at 0800. (Approximately 100 miles north of Sacramento on I-5.) Depart for Cottage Grove, OR at 0900. Stay overnight around Cottage Grove. Distance: 355 miles. Driving Time: 6 hours.

Day 2: Thursday, Sept. 11. Drive to Fair Harbor, WA. Distance: 276 miles. Driving Time: 5 hours. Launch at Fair Harbor, position car at Gig Harbor, stay overnight at Fair Harbor.

Day 3: Friday, Sept. 12. Depart Fair Harbor for Jarrell's Cove. Distance: 6 nm. Sailing time: 2 hours. Stay overnight.

Day 4: Saturday, Sept. 13. Depart Jarrell's Cove for Boston Harbor. Distance: 12 or 14 nm, depending on way we go. Sailing Time: 4 to 5 hours. Stay for two nights at Boston Harbor.

Day 5: Sunday, Sept. 14. Open day at Boston Harbor.

Day 6: Monday, Sept. 15. Depart Boston Harbor for Longbranch Marina. Distance: 10.6 nm. Sailing Time: 3+35 hours. Stay overnight at Longbranch Marina.

Day 7: Tuesday, Sept. 16. Depart Longbranch Marina for Gig Harbor. Distance 15.2 nm. Sailing Time: 5 hours. Pull out and stay the night at Gig Harbor as many good facilities in the area.

Day 8: Wednesday, Sept. 17. Depart Gig Harbor for points south. Stay overnight somewhere along the way.

Day 9: Thursday, Sept. 18. Depart wherever we stay for home.

**RENDEZVOUS
REMAIN OVERNIGHT
DISTANCES AND TIMES**

RENDEZVOUS

Time: 8:00 A.M. Wednesday morning, September 10, 2003

**Location: Orland, CA , Berry Patch Café
I-5 at second off ramp (going north)**

Depart: 9:00 A.M. for Cottage Grove, OR

REMAIN OVERNIGHT

Cottage Grove, OR

DISTANCE AND TIMES

Orland, CA to Cottage Grove, OR:	355 miles/ 6 hours
Cottage Grove, OR to Fair Harbor, WA:	276 miles/ 5 hours
Fair Harbor, WA to Gig Harbor, WA:	27 miles/ 55 minutes
Gig Harbor, WA to Cottage Grove, OR:	278 miles/ 5 hours

DRIVING DIRECTIONS

ORLAND, CA TO FAIR HARBOR WA

Directions

1. Take **I-5 NORTH** - go **465.9** mi
2. Take the **I-205 NORTH** exit - go **36.6** mi
3. Take the **I-5 NORTH** exit - go **96.7** mi
4. Take the **US-101 NORTH** exit - go **17.3** mi
5. Continue on **RAMP** - go **0.2** mi
6. Turn **R** on **WA-3** - go **2.6** mi
7. Continue on **N 1ST ST** - go **0.2** mi
8. Turn **R** on **E PINE ST** - go **0.1** mi
9. Continue on **WA-3** - go **11.8** mi
10. Turn **R** on **E GRAPEVIEW LOOP RD** - go **2.5** mi
11. **E GRAPEVIEW LOOP RD** becomes **GRAPEVIEW LOOP RD** - go **0.2** mi
12. Continue on **E GRAPEVIEW LOOP RD** - go **1.7** mi
13. Turn **L** on **GRAPEVIEW LOOP RD** - go **1.0** mi
14. Turn **R** on **TREASURE ISLAND RD** - go **0.1** mi
15. Turn **L** on **GRAPEVIEW POINT RD** - go **0.1** mi
16. Arrive at the center of **FAIR HARBOR, WA**

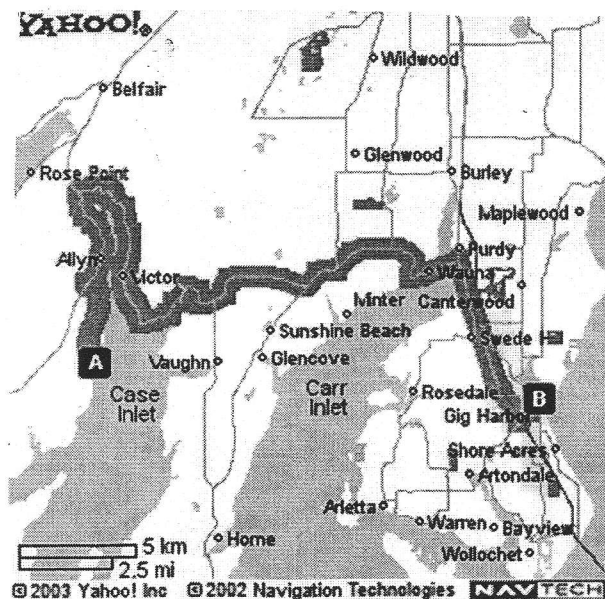
Note: I-205 North bypasses the confusion when I-5 goes through Portland, OR. It takes a few more miles, but unless you've been through Portland on I-5, I strongly recommend you take I-205 North until it rejoins I-5 North.

DRIVING DIRECTIONS

FAIR HARBOR TO GIG HARBOR

Directions

1. Starting in FAIR HARBOR, WA on GRAPEVIEW POINT RD - go 0.1 mi
2. Turn **R** on TREASURE ISLAND RD - go 0.1 mi
3. Turn **R** on GRAPEVIEW LOOP RD - go 2.7 mi
4. Make a Hard **R** Turn on E WA-3 - go 2.9 mi
5. Turn **R** on E WA-302 - go 5.0 mi
6. E WA-302 becomes ROCKY BAY POINT RD KP N - go 1.1 mi
7. Continue on WA-302 KP N - go 5.5 mi
8. Continue on WA-302 - go 5.0 mi
9. Take WA-16 EAST - go 1.4 mi
10. Continue on WA-16 EAST/WA-16 NW - go 1.5 mi
11. WA-16 EAST/WA-16 NW becomes WA-16 EAST - go 0.9 mi
12. Take the PIONEER WAY exit - go 0.3 mi
13. Turn **L** on PIONEER WAY - go 0.8 mi
14. Turn **R** on HARBORVIEW DR - go 0.1 mi
15. Arrive at the center of GIG HARBOR, WA

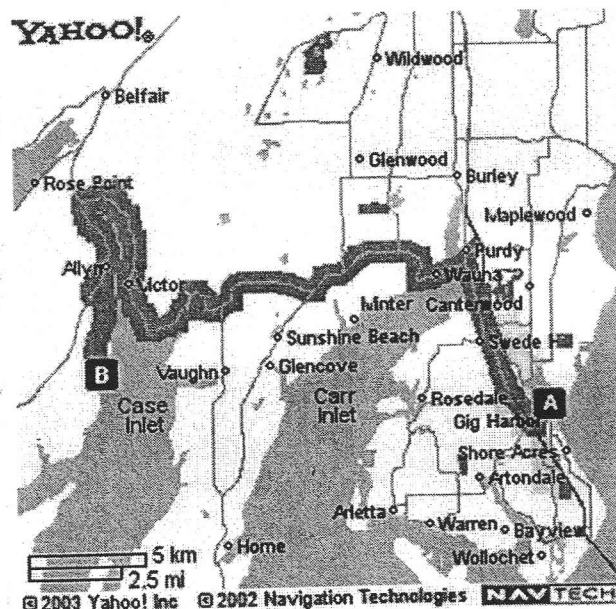


DRIVING DIRECTIONS

GIG HARBOR TO FAIR HARBOR

Directions

1. Starting in **GIG HARBOR, WA** on **HARBORVIEW DR** - go **0.1 mi**
2. Turn **L** on **PIONEER WAY** - go **0.6 mi**
3. Turn **L** to take **WA-16 WEST** - go **0.2 mi**
4. Turn **R** to take **WA-16 WEST** - go **1.1 mi**
5. Continue on **WA-16 WEST/WA-16 NW** - go **1.5 mi**
6. Continue on **WA-16 WEST** - go **0.9 mi**
7. Take the **PURDY DR NW** exit - go **0.5 mi**
8. Continue on **PURDY DR NW** - go **0.8 mi**
9. Turn **L** on **WA-302** - go **4.3 mi**
10. Continue on **WA-302 KP N** - go **6.5 mi**
11. **WA-302 KP N** becomes **E WA-302** - go **5.0 mi**
12. Turn **L** on **E WA-3** - go **2.9 mi**
13. Make a Sharp **L** Turn on **GRAPEVIEW LOOP RD** - go **2.7 mi**
14. Turn **L** on **TREASURE ISLAND RD** - go **0.1 mi**
15. Turn **L** on **GRAPEVIEW POINT RD.** - go **0.1 mi**
16. Arrive at the center of **FAIR HARBOR, WA**



**DRIVING
DIRECTIONS**

**GIG HARBOR, WA
TO ORLAND, CA**

Directions

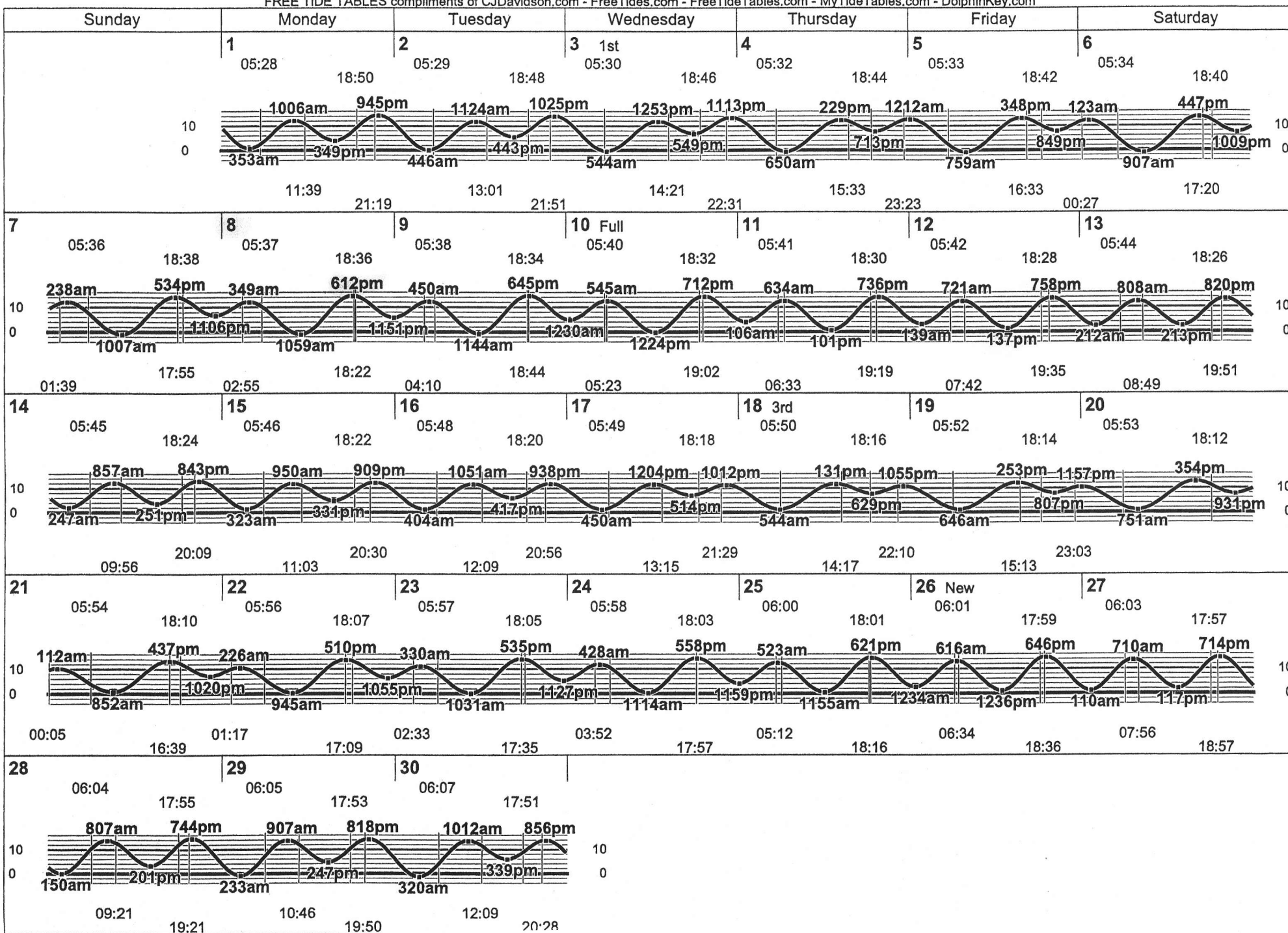
1. Starting in **GIG HARBOR, WA** on **HARBORVIEW DR** - go < **0.1** mi
 2. Bear **R** on **SOUNDVIEW DR** - go **1.3** mi
 3. Continue on **OLYMPIC DR** - go **0.2** mi
 4. Turn **R** on **OLYMPIC DR NW** - go **0.3** mi
 5. Turn **L** to take **WA-16 EAST** - go **8.5** mi
 6. Take the **I-5 SOUTH** exit - go **124.2** mi
 7. Take the **I-205 SOUTH** exit - go **36.6** mi
 8. Take the **I-5 SOUTH** exit - go **466.2** mi
 9. Arrive at **ORLAND, CA**
-

TIDES NEAR FAIR HARBOR

Washington, Seattle, Vaughn, Case Inlet
N 47° 20.5' / W 122° 46.5'

September 2003

FREE TIDE TABLES compliments of CJDavidson.com - FreeTides.com - FreeTideTables.com - MyTideTables.com - DolphinKey.com

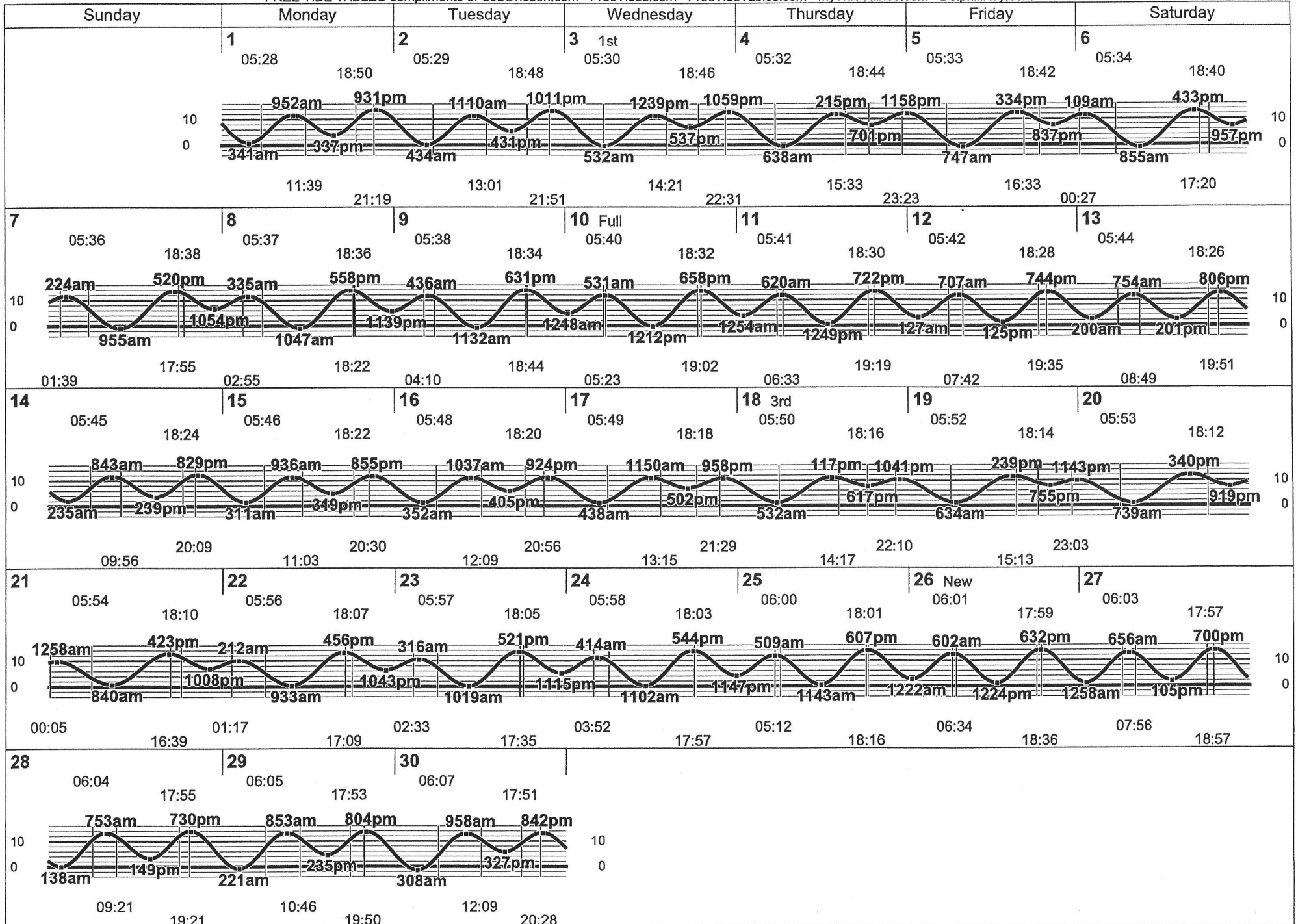


Washington, Seattle, Steilacoom, Cormorant Passage
 N 47° 10.4' / W 122° 36.2'

Tides

September 2003

FREE TIDE TABLES compliments of CJDavidson.com - FreeTides.com - FreeTideTables.com - MyTideTables.com - DolphinKey.com



GPS COORDINATES

MARINAS

Boston Harbor

47.08.5 N
122-54.1 W

Fair Harbor

47-20.5 N
122-49.8 W

Gig Harbor

47-19.8 N
122-34.7 W

Jarrell's Cove

47-17.0 N
122-53.2 W

Longbranch Marina

47-12.6 N
122-45.3 W

Steilacoom Marina

47-10.2 N
122-36.1 W

WAYPOINTS

Batch Passage – East End

47-11.2 N
122-40.3 W

Batch Passage – West End

47-11.7 N
122-42.3 W

Devil's Head

47-09.8N
122-45.5W

Drayton Passage

47-12.0 N
122-44.0 W

Johnson Point

47-10.8 N
122-48.8 W

Peale Passage – North end

47-13.7 N
122-55.3 W

Point Evans

47-17.0 N
122.32.5 W

Toliva Shoal

47-12.5 N
122-36.6 W

SAIL PLANS

THURSDAY
September 11

Launch at Fair Harbor. See chart 2, #3

Notes:

Stay overnight at Fair Harbor Marina. Tel # (360) 426-4028. There are supplies and groceries at the Marina but be prepared to cook own meals.

We will have to shuttle at least one car to Gig Harbor, 27 miles away. You can leave your car in the public parking lot, next to the launch ramp at Fair Harbor or take it to Arabella's Landing Marina in Gig Harbor where we will pull out. Parking at Arabella's is \$5.00 per night.

FRIDAY
September 12

FAIR HARBOR TO JARRELL'S COVE

Depart Fair Harbor for Jarrell's Cove. (See chart 2, #3 to # 2.)

Jarrell's Cove GPS coordinates:

47-17.0 N
122-53.2 W

Navigation: See chart #2

<u>Heading</u>	<u>Distance</u>	<u>Time @3kts/hr</u>
090	1.0 nm	0+20
155	1.0 nm	0+20
220	3.0 nm	1+00
180	<u>1.0 nm</u>	<u>0+20</u>
	6.0 nm	2+00

Note: Stay overnight at Jarrell's Cove Marina. Tel # (360) 426-8823. Limited facilities so be prepared to cook own dinner and breakfast.

SAIL PLANS

SATURDAY
September 13

JARRELL'S COVE TO BOSTON HARBOR

Depart Jarrell's Cove for Boston Harbor. (See chart 2, #2 to #11.)

Boston Harbor GPS coordinates:

47-08.5 N
122-54.1 W

Navigation: See chart #2

Headings: To be determined. We will sail south, down the west or east side of Hartstene Island. (See chart #2)

Distance: Either 12 or 14 nm, depending on which way we go.

Time: 4 to 5 hours.

Note: When sailing south on the western side of Hartstene Island, sail down Peale Passage. The northern entrance to Peale Passage is one nautical mile south of the Graham Bridge and may be hard to find. GPS coordinates are:

Peale Passage – North end

47-13.7 N
122-55.3 W

Note: Stay for two nights at Boston Harbor Marina. Tel # (360) 357-5670. Local sailing in the area is reported to be very good. Sunday is an open day. Perhaps we can sail to Olympia Harbor for lunch. It is 6 nm to the south down Budd Inlet.

SAIL PLANS

MONDAY
September 15

BOSTON HARBOR TO LONGBRANCH MARINA

Depart Boston Harbor for Longbranch Marina (See chart 2, #11 to #7.)

Longbranch Marina GPS coordinates:

47-12.6 N
122-45.3 W

Navigation: See chart 2

<u>Heading</u>	<u>Distance</u>	<u>Time @3kts/hr</u>
035	3.6 nm	1+15
055	1.0 nm	+20
095	2.2 nm	+45
030	1.3 nm	0+25
350	1.5 nm	0+30
270	<u>1.0 nm</u>	<u>0+20</u>
	10.6 nm	3+35

Note: Stay overnight at Longbranch Marina. Dockmaster is Mark Runions, Tel # (253) 884-5137. Facilities are minimal so be prepared to cook own dinner and breakfast. There are no reservations and it is first come, first served. We can call ahead and let them know we are coming.

SAIL PLANS

TUESDAY
September 16

LONGBRANCH MARINA TO GIG HARBOR

Depart Longbranch Marina for Gig Harbor (See chart 2, #7 to chart 1, #4.)

Gig Harbor GPS coordinates:

47-19.8 N
122-34.7 W

Navigation: See charts 1 and 2.

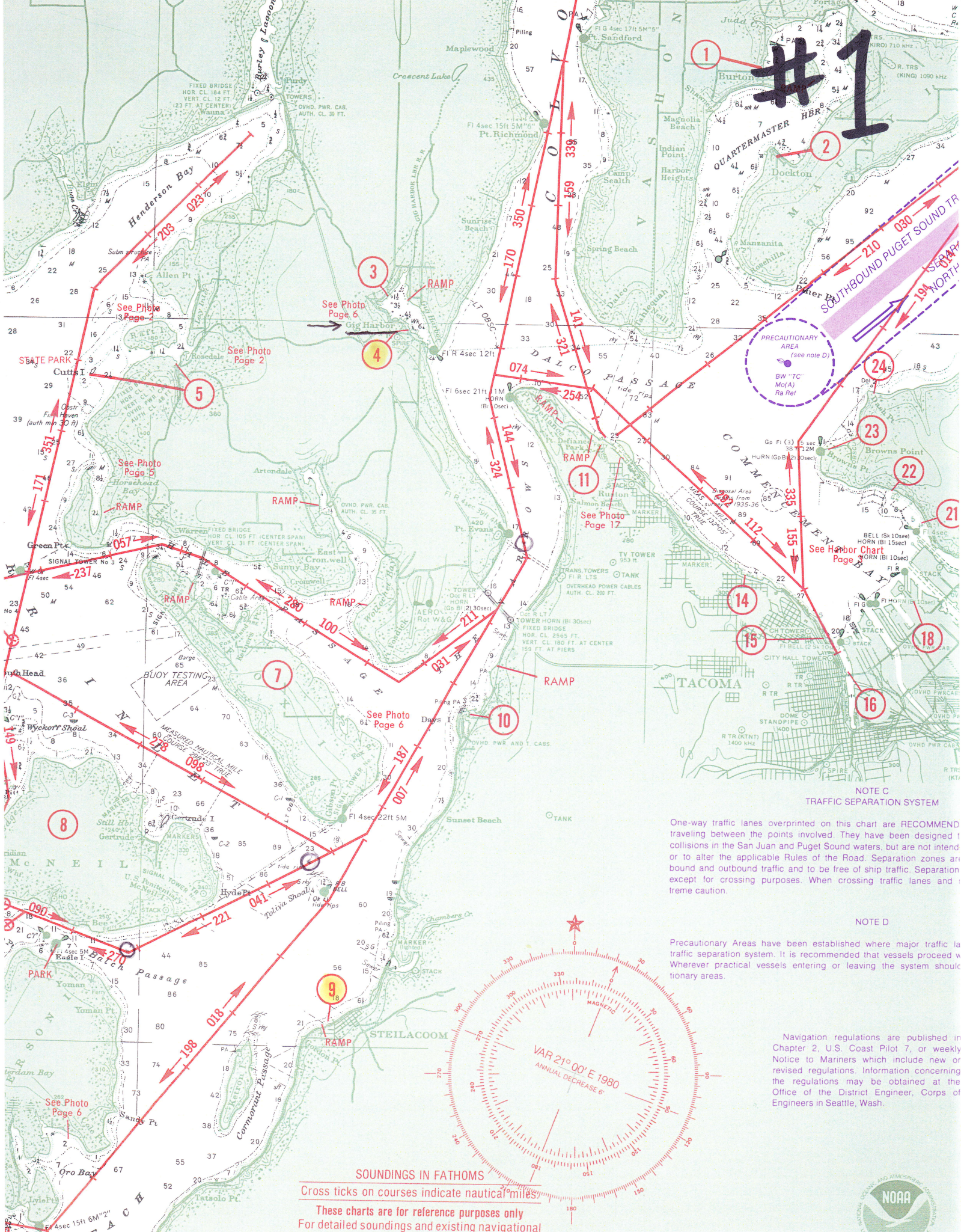
<u>Heading</u>	<u>Distance</u>	<u>Time @3kts/hr</u>
090	3.7 nm	1+15
040	3.5 nm	1+10
005	4.5 nm	1+30
310	<u>3.5 nm</u>	<u>1+10</u>
	15.2 nm	5+05

Notes:

We must depart Longbranch Marina no later than 10 A.M. to catch the low tide to shoot the Tacoma Narrows.

Stay overnight at Arabella's Landing Marina. (Center of town, next to Bayview Dock, the longest dock in town.) Tel # (253) 851-1793. Nice restaurants, a motel, and B & B nearby.

#1



NOTE C
TRAFFIC SEPARATION SYSTEM

One-way traffic lanes overprinted on this chart are RECOMMEND traveling between the points involved. They have been designed to comply in the San Juan and Puget Sound waters, but are not intended to alter the applicable Rules of the Road. Separation zones are bound and outbound traffic and to be free of ship traffic. Separation except for crossing purposes. When crossing traffic lanes and extreme caution.

NOTE D

Precautionary Areas have been established where major traffic lanes intersect. It is recommended that vessels proceed with caution. Wherever practical vessels entering or leaving the system should use cautionary areas.

Navigation regulations are published in Chapter 2, U.S. Coast Pilot 7, or weekly Notice to Mariners which include new or revised regulations. Information concerning the regulations may be obtained at the Office of the District Engineer, Corps of Engineers in Seattle, Wash.

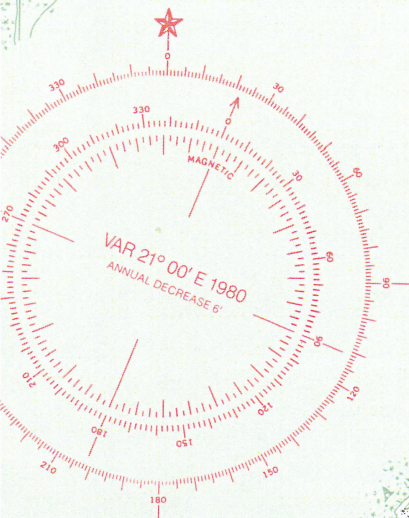
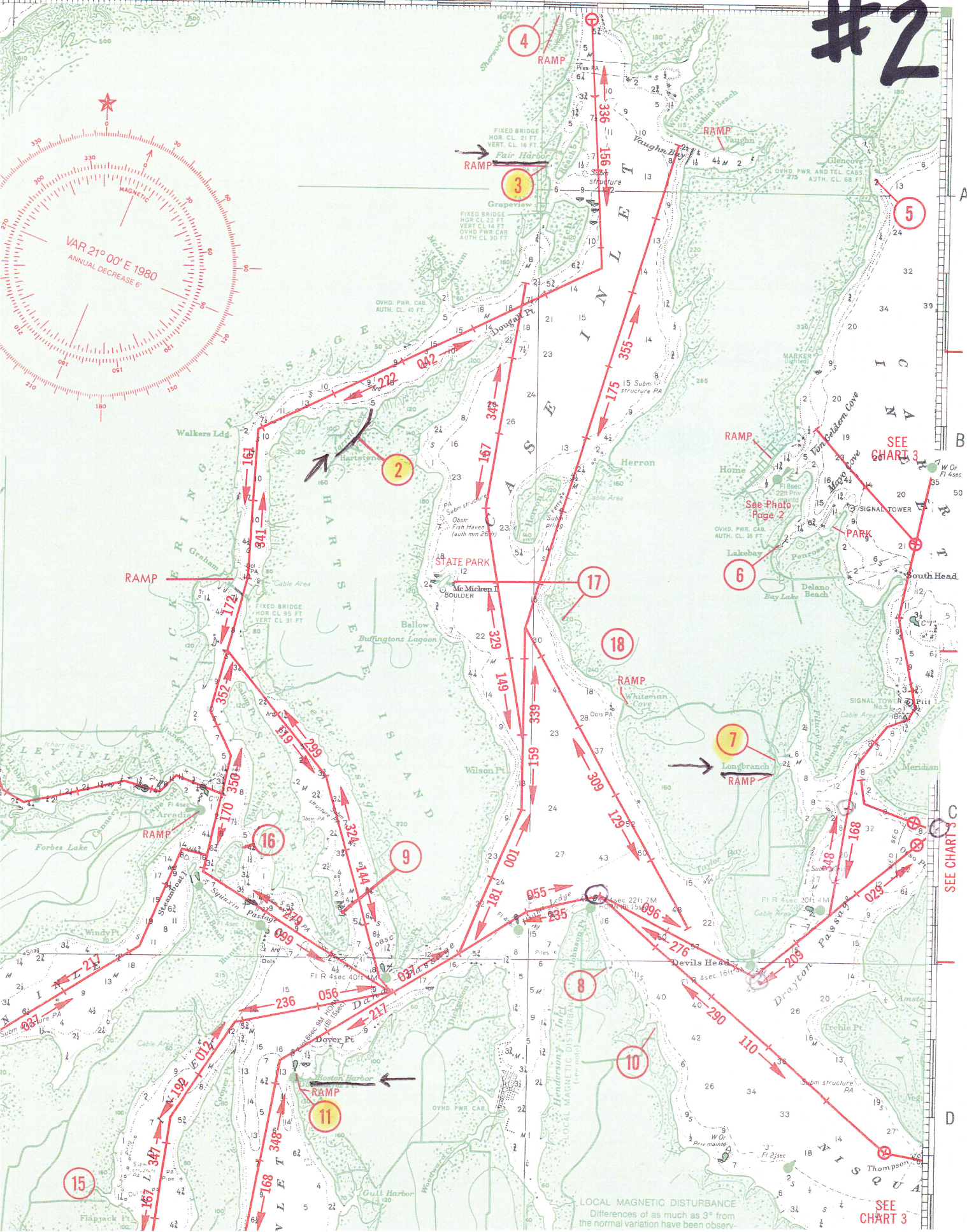
SOUNDINGS IN FATHOMS
Cross ticks on courses indicate nautical miles
These charts are for reference purposes only
For detailed soundings and existing navigational



www.can-sail.com

123° 55' 50' SEE CHART 19 45'

#2



SEE CHART 3

SEE CHART C

SEE CHART 3