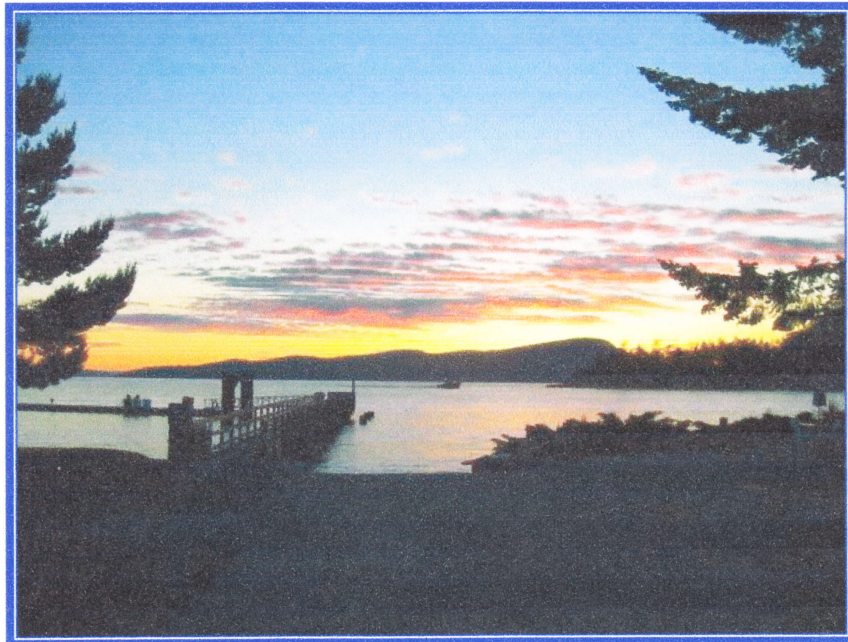


**THE FOURTH ANNUAL  
GREAT POTTER YACHTER  
NORTHWEST ESCAPE  
AND  
MESSABOUT**



**September 5 – 20, 2006**

*“There is nothing – absolutely nothing –  
half so much worth doing  
as simply messing about in boats.”*

**Kenneth Grahame  
“The Wind in the Willows”**

## MISSION STATEMENT

### **The mission,**

should you choose to accept it, is to once again trailer our intrepid sailing vessels to the wilds of the Pacific Northwest to advance the cause of Potterdom and civilization.

### **To that end,**

remember the words of former Potter Yachter Commodores Rich McDevitt and Bruce Hood who commanded, *“Have fun!”* and *“It’s not how fast you get there but how much fun you have along the way.”*

### **NOTE**

While we travel with friends, we sail alone. The enclosed information and charts are for planning and reference only. The listed GPS coordinates have not been verified and the sailing directions are just to get you pointed in the approximate direction. Use charts such as #3538 Desolation Sound, and #3541 Toba Inlet, published by the Canadian Hydrographic Service.

*Cover photo courtesy of Dave Lawson*

## DRIVING DIRECTIONS

**Day 1:** Tuesday, Sept. 5. Depart for points north. Remain over night at Yreka, CA. This is approximately 320 miles, 6 hours driving, from the Bay Area. By driving to Ashland or Medford, OR, and spending the night, the drive next day will be less.

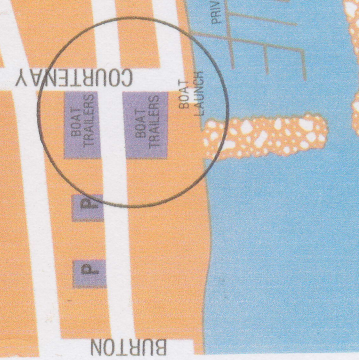
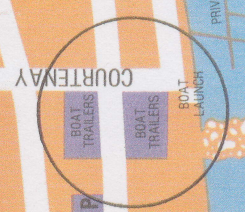
**Day 2:** Wednesday, Sept 6. Drive to Olympia, WA, and remain over night. Distance 435 miles, 7+30 hours driving time from Yreka, CA.

**Day 3:** Thursday, Sept 7.

1. We need to depart Olympia no later than 8:00 a.m. in order to catch the two afternoon ferries in British Columbia.
2. Drive to Bellingham, WA. Distance 170 miles, 3+30 hours driving time.
3. From Bellingham, take Hwy 539 (Exit 256, Meridian) towards Lynden. Distance 15 miles, 35 minutes driving time to border. Time to cross border unknown.
4. Cross the border and continue on Hwy 13 to Trans Canada Highway One. Distance 25 miles, 45 minutes driving time.
5. Take Canada Highway One west/north, through Vancouver, to Horseshoe Bay, distance 35 miles, approx 45 minutes drive.
6. Catch the 1:20//3:30//5:30 ferry to Langdale. 40 minute crossing.
7. Drive to Earl's Bay, distance 50 miles, driving time 1+30.
8. Catch the 4:25//6:25//8:20//10:10 ferry to Saltery Bay. 50 minute crossing.
9. Drive to Westview. Distance 15 miles, driving time 25 minutes.
10. On outskirts of Westview, Hwy 101 turns into Thunder Bay St. See attached map. Turn right onto Joyce Ave.
11. Drive 2.2 miles to Courtenay Street. Turn left. Drive .3 miles. Parking for boat trailers is on right, either side of Wellington. Pick up parking permits at Town Municipal Hall on Duncan St.



# Map C Townsite



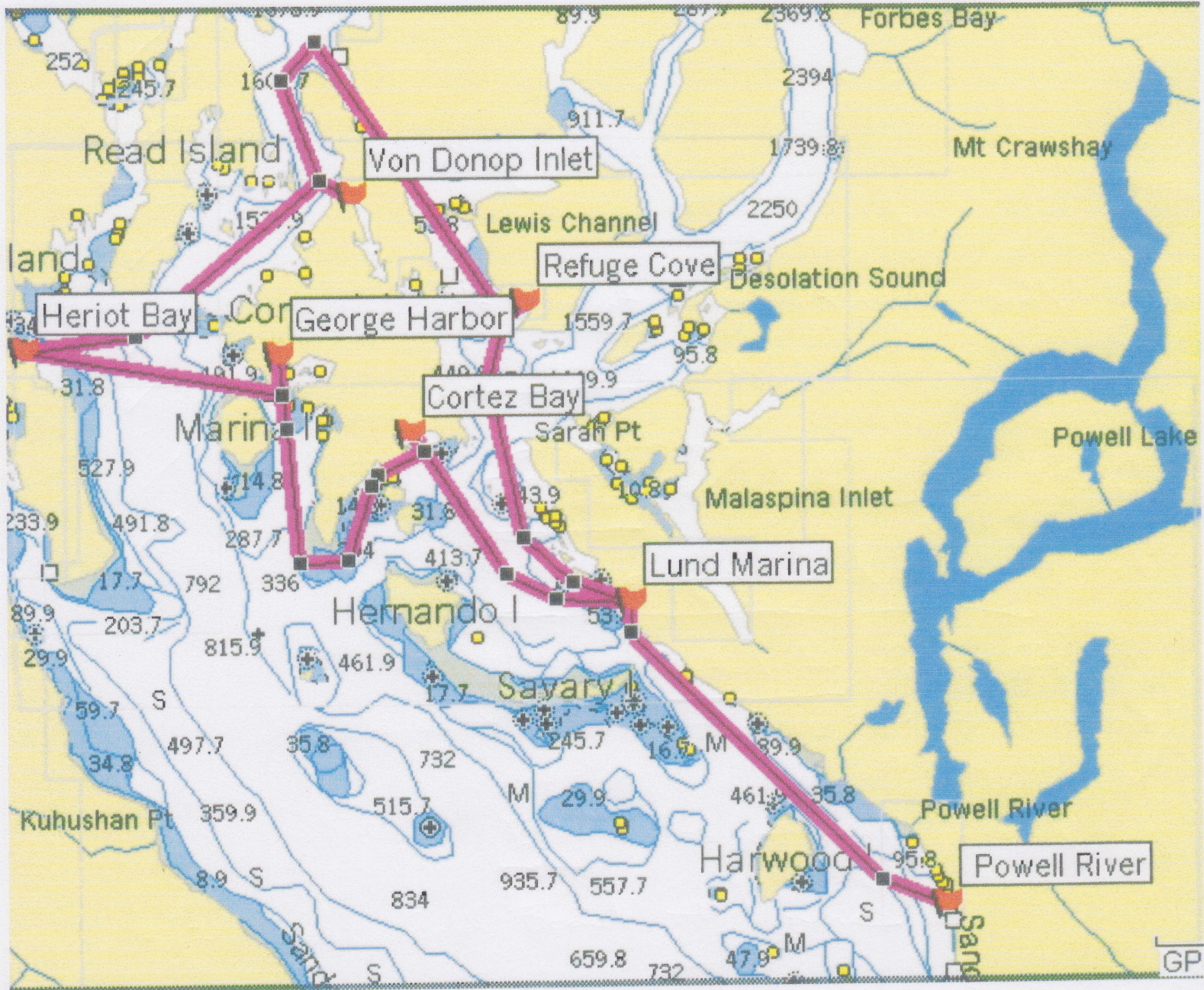
## SAIL PLAN

With many thanks to Jim Kirwan.

- ✓ **Day 1: Friday, Sept 8.** Depart Westview for Lund Marina on Malaspina Peninsula. Distance 14 nm.
- ✓ **Day 2: Saturday, Sept 9.** Depart Lund Marina for Refuge Cove Marina on West Redonda Island. Distance 10 nm.
- ✓ **Day 3: Sunday, Sept 10.** Free day at Refuge Cove Marina. There are three free days built into the schedule. Where we take them can be changed in a heartbeat and the ones shown here are only suggestions.
- ✓ **Day 4: Monday, Sept 11.** Depart Refuge Cove for Von Donop Anchorage, Cortes Island. Distance 14 nm.
- ✓ **Day 5: Tuesday, Sept 12.** Free day at ~~Von Donop~~ Anchorage. *to Heriot Bay \* great sail stuff*
- ✓ **Day 6: Wednesday, Sept 13.** ~~Depart Von Donop~~ Anchorage to Heriot Bay Marina, Quadra Island. Distance 12 nm. *Heriot Bay*
- ✓ **Day 7: Thursday, Sept 14.** Free Day at Heriot Bay Marina. *Gorge Harbor*
- ✓ **Day 8: Friday, Sept 15.** Depart ~~Heriot Bay Marina~~, via Shark Spit, for Gorge Harbour Marina, Cortes Island. Distance 10 nm. *Cortes Full → back to Refuge*
- ✓ **Day 9: Saturday, Sept 16.** ~~Depart Gorge Harbour Marina, via Sutil Point, for Cortes Bay~~ Anchorage, Cortes Island. Distance 11 nm. *Refuge → Lund*
- Day 10: Sunday Sept 17.** ~~Depart Cortes Bay Anchorage for Westview.~~ Distance 17 nm. *Beach Garden Hotel to Canox Ferry*
- (A possible alternative is to sail to Lund Marina, distance 8 nm, and spend a night there before heading for Westview. This would add another day on the water, or we could do a trade off with one of the free days.) *Canox → Victoria → Ferry to Port Angeles*
- Day 11: Monday Sept 18.** Depart ~~Westview~~ for points south. Arrive home around Wednesday evening, Sept 20. *Port Angeles → Gold Beach*
- # 12 Tues *Gold Beach → home*

**NOTE:** This schedule calls for spending three nights at anchor outside of a Marina.

# THE ROUTE



## SAILING DIRECTIONS

### **Westview to Lund Marina (See Chart #1):**

Distance 14 nm. Clear the harbor and sail WNW, or 290 degrees, for 14 nm. At mile six, stand off from shore to avoid Atrevida Reef (supposedly marked by a red buoy).

### **Lund Marina to Refuge Cove Marina (See Chart #2):**

Distance 10 nm. Clear the harbor and sail WNW, or 300 degrees, for Thulin Passage. Once clear of Thulin Passage, head for Sarah Point at NW end of Malaspina Peninsula. From Sarah Point, head for Kinghorn Island in Desolation Sound on a northerly heading. Depending on winds and currents, round Kinghorn Island to west or east. (See Kinghorn waypoint). Clear Kinghorn Island and sail north for the entrance to Refuge Cove.

### **Refuge Cove to Von Donop Anchorage (See Chart #3):**

Distance 14 nm. Clear Refuge Cove and sail NW up Lewis Channel. Round the northern tip of Cortes Island and sail SE for the entrance to Von Donop Inlet.

### **Von Donop Anchorage to Heriot Bay Marina (See Chart #4):**

Distance 12 nm. Sail WNW to exit Von Donop Inlet. Sail SSW for the Subtle Islands at the western tip of Cortes Island. Depending on conditions, round the Subtle Islands to the north or south and sail WSW, or 240 degrees, across Sutil Channel and enter Heriot Bay.

### **Heriot Bay to Gorge Harbour Marina (See Chart #4):**

Distance 10 nm. Clear Heriot Bay and sail easterly, or 080 degrees, to Shark Spit. Sail East, 090 degrees, to the entrance to Gorge Harbour.

### **Gorge Harbour Marina to Cortes Bay Anchorage (See Chart #4):**

Distance 11 nm. Sail South to clear Gorge Harbour. Once clear of entrance to Gorge Harbour, sail SSE to clear Sutil Point on the southern end of Cortes Island. Head for Sutil Beacon (see GPS Coordinates), before rounding Sutil Point. **NOTE: Stay well clear of Sutil Point to avoid shallow waters.** Sail north towards Twin Islands. Clear Twin Islands to the north and pass Central Rock. The entrance to Cortes Bay is 1 nm to the NNE of Central Rock.

### **Cortes Harbour Anchorage to Westview (See Charts #2 and #1):**

Distance to Westview 17 nm. Clear Cortes Harbour and sail ESE, or 110 degrees. Sail between Major Islet and the Copeland Islands, pass Lund and continue ESE. Distance to Lund 8.5 nm.

## GPS COORDINATES

Not Verified.

(degrees-minutes-seconds)

Westview: 49-50-10 N 124-31-50 W

Lund Marina: 49-59-00 N 124-45-50 W

Kinghorn Waypoint: 50-05-00N 124-52-00W

Refuge Cove Marina: 50-07-30 N 124-50-20 W

Von Donop Anchorage: 50-10-00 N 124-56-35 W

Heriot Bay Marina: 50-06-20 N 125-12-35 W

Shark Spit: 50-05-22 N 125-02-24W

Gorge Harbour Entrance: 50-05-00N 125-00-55W

Gorge Harbour Marina: 50-05-50 N 125-00-30 W

Sutil Beacon: 50-00-10N 125-00-20W

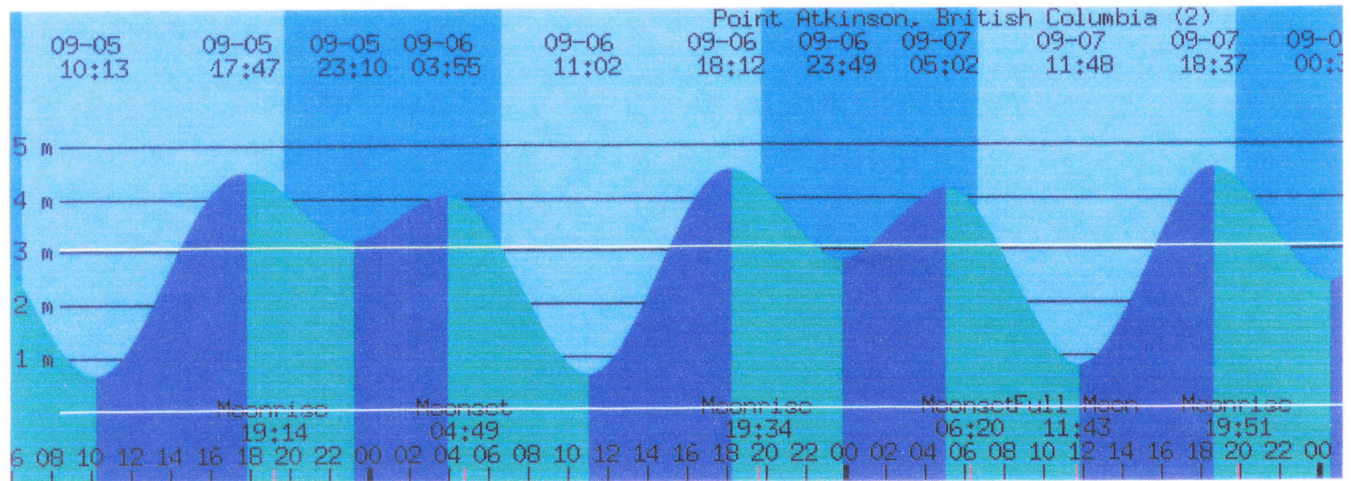
Cortes Bay Anchorage: 50-03-50 N 124-55-45 W



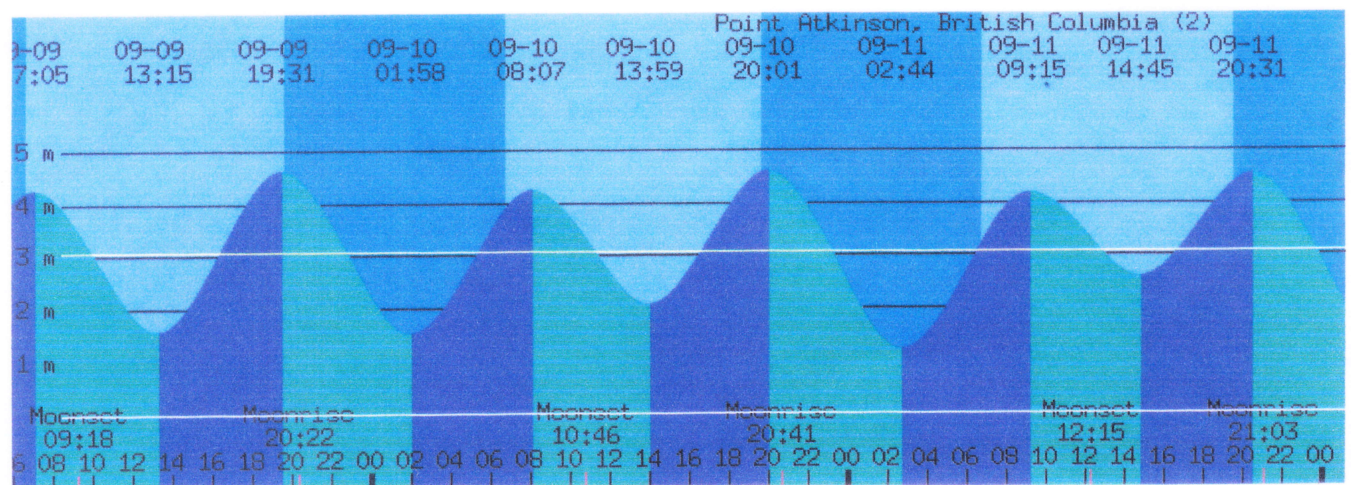
# WWW Tide and Current Predictor

## Point Atkinson, British Columbia (2)

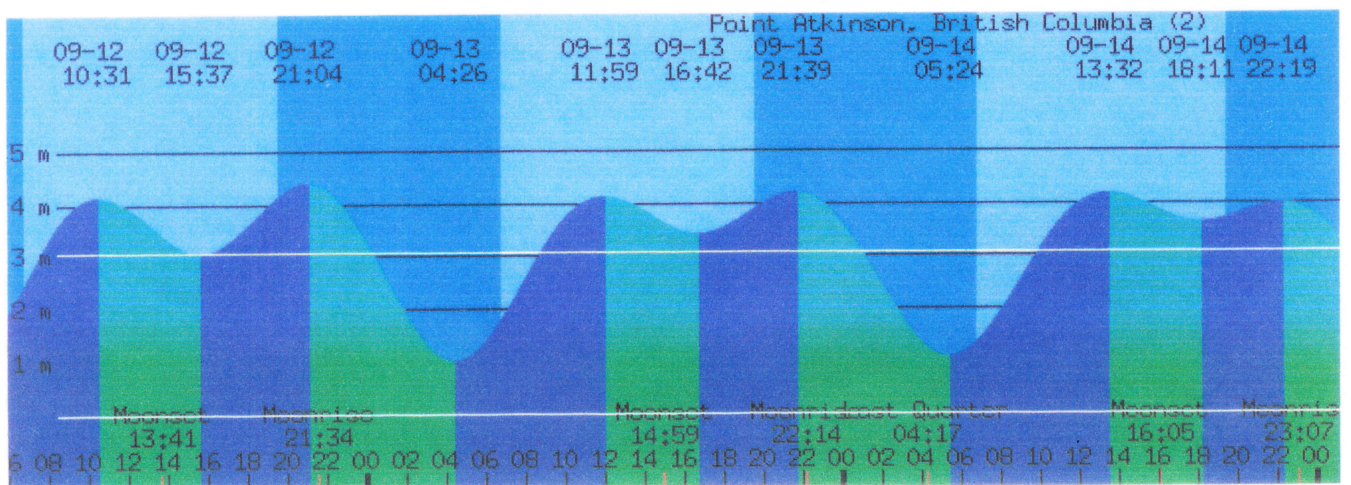
### 5 September 2006 - 9 September 2006



### 9 September 2006 - 13 September 2006



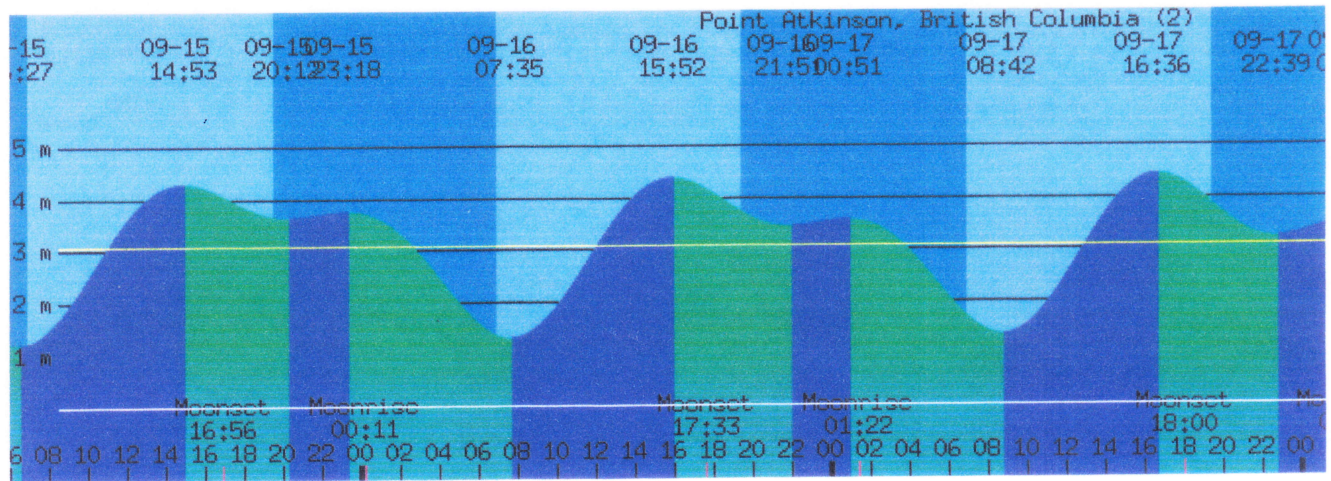
### 12 September 2006 - 16 September 2006



# WWW Tide and Current Predictor

## Point Atkinson, British Columbia (2)

15 September 2006 - 19 September 2006



If present, horizontal lines mark mean sea level and datum (usually mean lower low water). Colors under the curve indicate rising and falling tide (not ebb and flood currents).

### SECONDARY PORTS

TABLE 3  
INFORMATION AND TIDAL DIFFERENCES  
RENSEIGNEMENTS ET DIFFÉRENCES DES MARÉES

### PORTS SECONDAIRES

INDEX NO. NO D'INDEX	SECONDARY PORT PORT SECONDAIRE	TIME ZONE FUSEAU HORAIRE	POSITION LAT. N. LONG. W. LAT. N. LONG. O.		DIFFERENCES			DIFFÉRENCES			RANGE MARNAGE		MEAN WATER LEVEL NIVEAU MOYEN DE L'EAU
					HIGHER HIGH WATER PLEINE MER SUPÉRIEURE			LOWER LOW WATER BASSE MER INFÉRIEURE			MEAN TIDE MARÉE MOYENNE	LARGE TIDE GRANDE MARÉE	
					TIME HEURE	MEAN TIDE MARÉE MOYENNE	LARGE TIDE GRANDE MARÉE	TIME HEURE	MEAN TIDE MARÉE MOYENNE	LARGE TIDE GRANDE MARÉE			
on/sur POINT ATKINSON, pages 56-59													
8006	MALASPINA INLET OKEOVER INLET	+8	49 59	124 42	+0 15	+1.5	+1.5	+0 19	+0.5	+0.6	11.6	17.5	11.3
8008	HOMFRAY CHANNEL PRIDEAUX HAVEN	+8	50 09	124 40	+0 13	+1.4	+2.0	+0 13	+0.3	+0.5	11.7	18.2	11.3
8015	TOBA INLET CHANNEL ISLAND	+8	50 19	124 44	+0 07	+1.2	+1.3	+0 12	+0.3	0.0	11.6	18.0	10.7
8025	DEER PASSAGE REDONDA BAY	+8	50 15	124 57	+0 10	+0.8	+0.7	+0 12	+0.3	+0.1	11.1	17.2	10.7
8037	SUTIL CHANNEL GORGE HARBOUR	+8	50 06	124 59	+0 14	+1.6	+1.6	+0 15	+0.8	+0.8	11.5	17.4	11.5
8038	WHALETOWN BAY	+8	50 06	125 03	+0 07	+1.5	+1.4	+0 10	+0.9	+1.0	11.3	17.2	11.5
8045	HOSKYN CHANNEL SURGE NARROWS	+8	50 13	125 07	+0 13	+0.3	+0.6	+0 13	+0.2	+0.3	10.8	17.0	10.5

## DATES, PLACES, & TELEPHONE NUMBERS

**NOTE:** Recommend you leave this, and the second copy of Emergency Contacts, with someone at home in order to contact you in an emergency.

- Day 1:** Tuesday, Sept. 5. Depart for points north. Remain overnight at Yreka, CA.
- Day 2:** Wednesday, Sept 6. Drive to Olympia, WA, and remain overnight.
- Day 3:** Thursday, Sept 7. Drive to Westview B.C. and remain overnight.  
Westview Harbour Master: (604) 485-5244.
- Day 4:** Friday, Sept 8. Depart Westview for Lund Marina on Malaspina Peninsula.  
Lund Harbour Authority Warf: (604) 483-4711.
- Day 5:** Saturday, Sept 9. Depart Lund Marina for Refuge Cove Marina on West Redonda Island.  
Refuge Cove General Store: (250) 935-6659
- Day 6:** Sunday, Sept 10. Free day at Refuge Cove Marina.
- Day 7:** Monday, Sept 11. Depart Refuge Cove for Von Donop Anchorage,  
Cortes Island.
- Day 8:** Tuesday, Sept 12. Free day at Von Donop Anchorage.
- Day 9:** Wednesday, Sept 13. Depart Von Donop Anchorage to Heriot Bay Marina on Quadra Island.  
Heriot Bay Marina: (250) 285-3322
- Day 10:** Thursday, Sept 14. Free Day at Heriot Bay Marina.
- Day 11:** Friday, Sept 15. Depart Heriot Bay Marina for Gorge Harbour Marina,  
Cortes Island.  
Gorge Harbour Marina Resort: (250) 935-6433
- Day 12:** Saturday, Sept 16. Depart Gorge Harbour Marina for Cortes Bay Anchorage,  
Cortes Island.
- Day 13:** Sunday Sept 17. Depart Cortes Bay Anchorage for Westview. Distance 17 nm.  
Westview Harbour Master: (604) 485-5244.
- Day 14:** Monday Sept 18. Depart Westview for points south. Arrive home around  
Wednesday evening, Sept 20.